

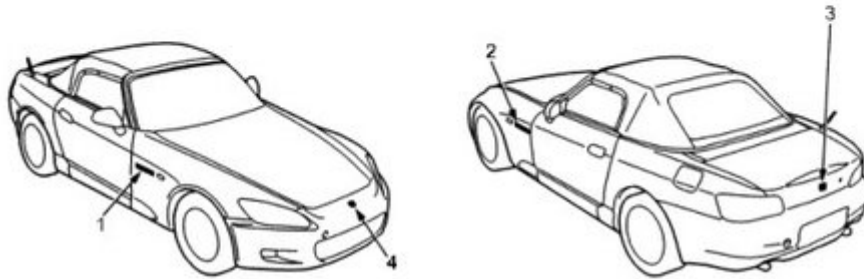
Exterior trim
Emblem Replacement

20-82

NOTE: When removing the emblems, take care not to scratch the body.

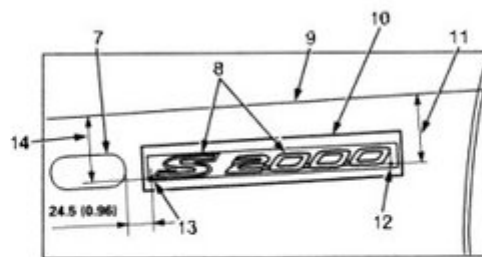
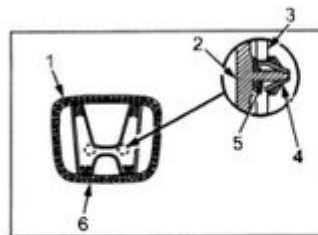
Apply the emblems where shown, and note these items.

- The left side S2000 emblem is shown, right side is the same manner.
- Clean the body surface with a sponge dampened in alcohol.
- After cleaning, keep oil, grease and water from getting on the surface.



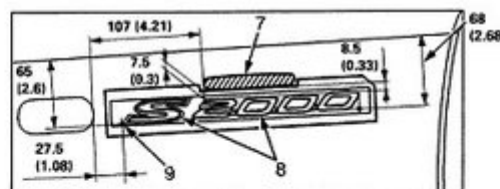
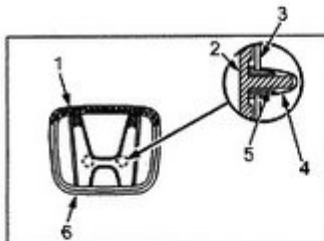
1. S2000 EMBLEM/HONDA EMBLEM
2. S2000 EMBLEM/HONDA EMBLEM
3. REAR "H" EMBLEM
4. FRONT "H" EMBLEM

Unit: mm (in.)



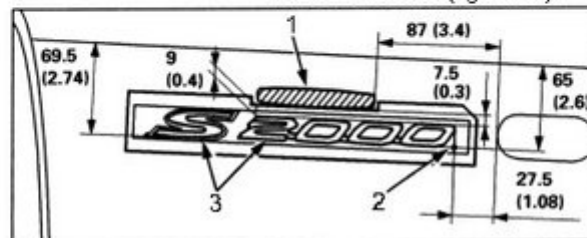
1. ADHESIVE TAPE
2. EMBLEM
3. FRONT BUMPER
4. CLIP
5. GUIDE PIN
6. FRONT "H" EMBLEM
7. FRONT SIDE TURN SIGNAL LIGHT
8. S2000 EMBLEM
9. BODY LINE
10. APPLICATION GUIDE FOAM
11. Left side: 68 (2.68) Right side: 65 (2.6)
12. Align this position (for right side).
13. Align this position (for left side).
14. Left side: 65 (2.6)
Right side: 69.5 (2.74)

For some models (left side):



1. ADHESIVE TAPE
2. EMBLEM
3. TRUNK LID
4. CLIP
5. GUIDE PIN
6. REAR "H" EMBLEM
7. HONDA EMBLEM
8. S2000 EMBLEM
9. Align.

For some models (right side):



1. HONDA EMBLEM
2. Align.
3. S2000 EMBLEM